

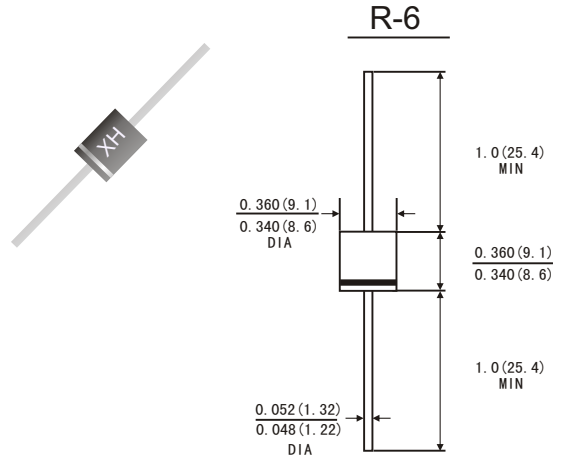


FEATURES

- Low leakage
- Low forward voltage drop
- High current capability
- High current surge
- High reliability
- High temperature soldering guaranteed:260°C/10 seconds at terminals
- Component in accordance to RoHS 2002/95/EC and WEEE 2002/96/EC

MECHANICAL DATA

- Case: R-6 molded plastic body
- Terminals: Plated axial leads, solderable per MIL-STD-750,Method 2026
- Polarity: Color band denotes cathode end
- Mounting Position: Any
- Weight: 0.074 OUNCE,2.08 grams



Dimensions in inches and (millimeters)

MAXIMUM RATINGS AND ELECTRICAL CHARACTERISTICS

(Rating at 25°C ambient temperature unless otherwise specified.Single phase ,half wave ,60Hz,resistive or inductive load. For capacitive load,derate current by 20%.)

		Symbols	FR 601	FR 602	FR 603	FR 604	FR 605	FR 606	FR 607	Units
Maximum Recurrent Peak Reverse Voltage		V _{RRM}	50	100	200	400	600	800	1000	Volts
Maximum RMS Voltage		V _{RMS}	35	70	140	280	420	560	700	Volts
Maximum DC Blocking Voltage		V _{DC}	50	100	200	400	600	800	1000	Volts
Maximum Average Forward Rectified Current 0.375"(9.5mm)lead length at T _A =55°C		I(AV)	6.0							Amps
Peak Forward Surge Current 8.3ms single half sine-wave superimposed on rated load (JEDEC method)		I _{FSM}	200							Amps
Maximum Instantaneous Forward Voltage at 6.0A		V _F	1.2							Volts
Maximum DC Reverse Current at rated DC blocking voltage	T _A =25°C	I _R	10.0							μA
	T _A =100°C		200							
Maximum reverse recovery time(Note1)		t _{rr}	150			250	500		ns	
Typical junction capacitance(Note2)		C _J	100							pF
Operating junction and storage temperature range		T _J T _{STG}	-65 to +150							°C

Note: 1.Test conditions: I_F=0.5A,I_R=1.0A,I_{RR}=0.25A.

2.Measured at 1MHz and applied reverse voltage of 4.0 Volts D.C.



FIG.1-TYPICAL FORWARD CURRENT DERATING CURVE

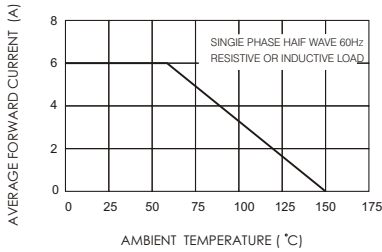


FIG.2-MAXIMUM NON-REPETITIVE FORWARD SURGE CURRENT

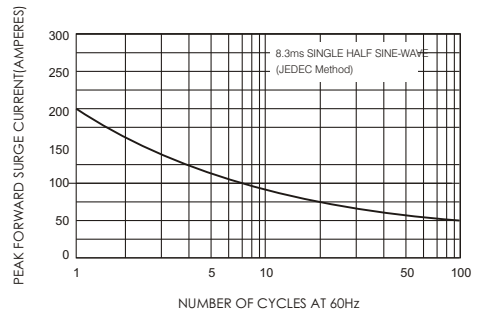


FIG.3-TYPICAL INSTANTANEOUS FORWARD CHARACTERISTICS

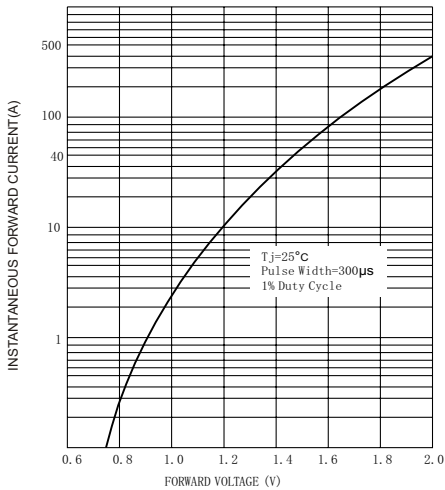


FIG.4-TYPICAL JUNCTION CAPACITANCE

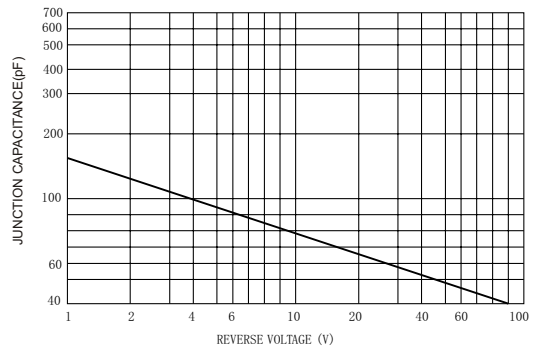
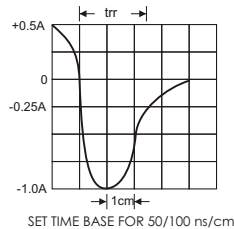
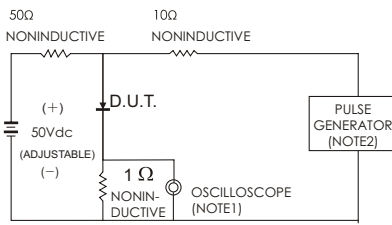


FIG.5-TEST CIRCUIT DIAGRAM AND REVERSE RECOVERY TIME CHARACTERISTIC



NOTES: 1. Rise Time = 7ns max. input Impedance = 1 megohm 22pF
2. Rise Time = 10ns max. source Impedance = 50 ohms